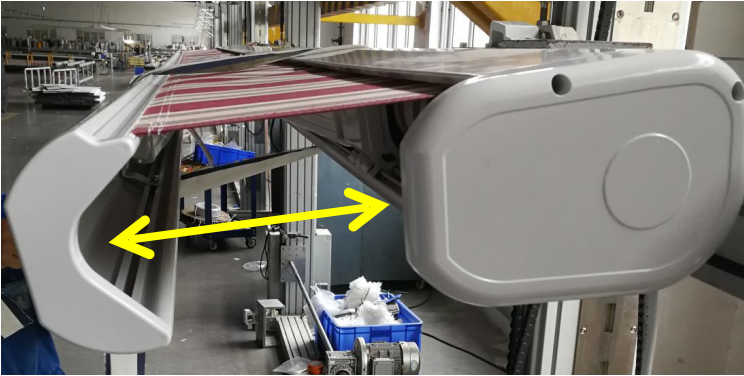


CHANGING THE MOTOR



1. Open the awning around 50cm.

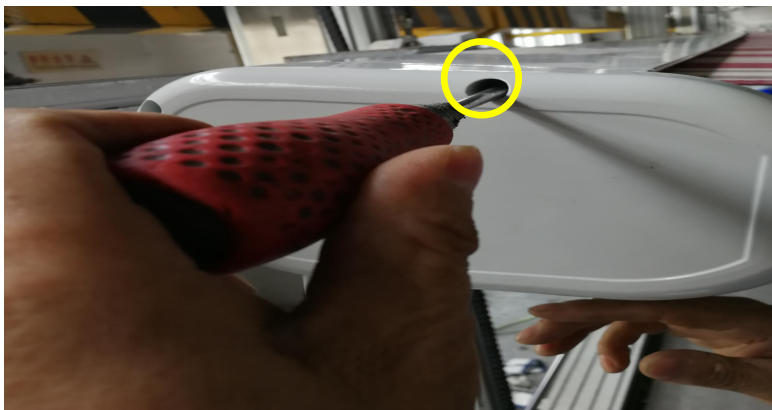
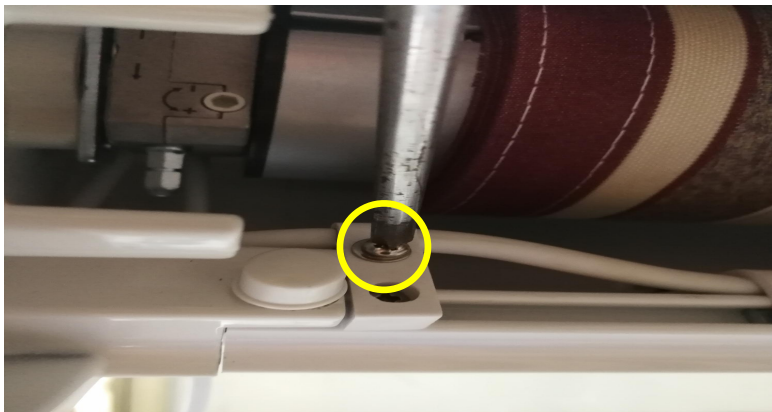


2. Securely bind the awning.

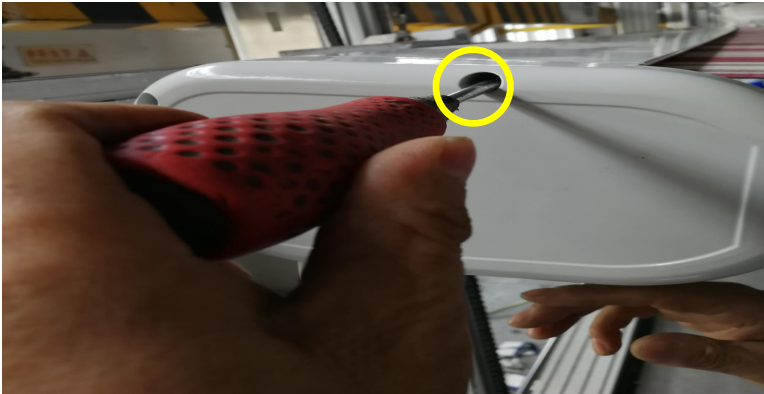
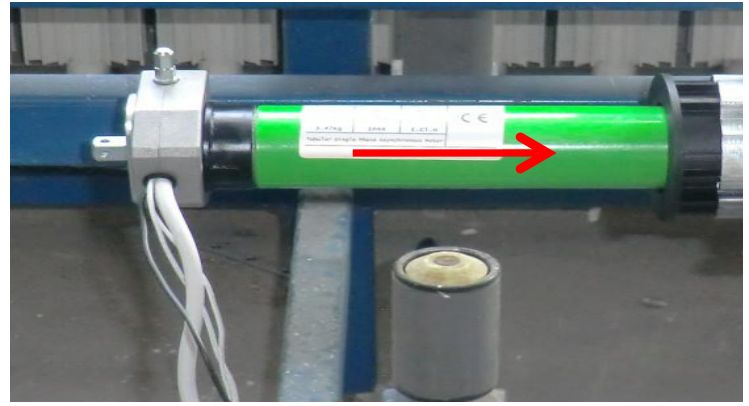
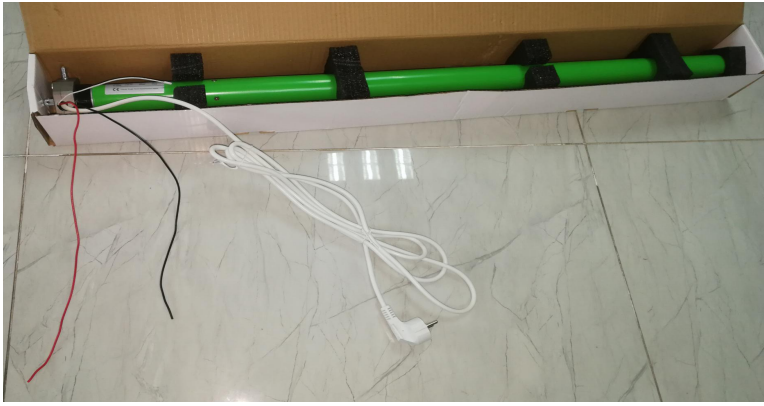
Rope at three different positions to ensure safety during the motor change.

3. Extend the awning slightly more to make the fabric loose.

4. Remove the end cap of awning & slide out the old motor.



5. Slide the new motor into position & refit the end cap



6. Pair the remote and motor ([instructions](#))

7. Retract the awning and press the stop button before the awning fully cassettes.
(At this time the motor limit is incorrect, so you must use stop button).

8. Loosen the ropes.



9. Set the close limit (Rotate direction: "↑" "–") around 8 rotations to avoid the awning retracting too much ([instruction](#)).

10. Using the remote extend the awning and set the extension limit ([instruction](#)).